

## Chapter Fourteen (c): Proxy Settings

### Summary of Chapter:

- How to set your proxy settings correctly on your web browser.

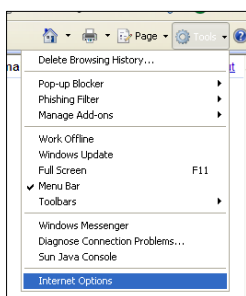
### Software Revision Required:

- Applicable to software revision 5.2.0 > NetPilots

(Net/CachePilot will be referred to as 'Pilot'. All image examples are of a NetPilot.)

### Proxy Settings:

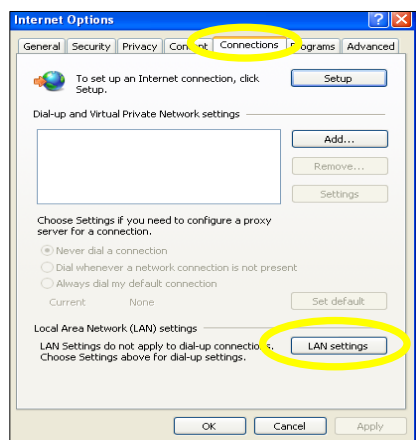
- Open up a web browser:



- Select 'Tools' and then 'Internet options' from the top toolbar, shown left.

- Or open up your 'Control Panel' from the 'Start' menu and select the 'Internet Options' icon.

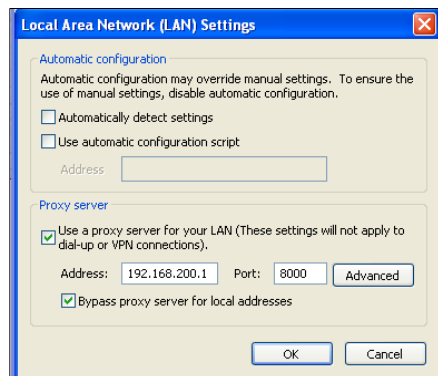
- Once you have selected 'Internet Options', a new window will open.



- Select the 'Connection' tab, as highlighted left.

- Then select the 'LAN Settings' button as highlighted.

- You will see a new window open, as shown below.



- Select the two tick boxes available in the bottom half of this window. Please make sure both tick boxes in the upper section of the window are un-ticked.

- Enter in the LAN IP address of your Pilot.

- Once you have done this, select 'OK' and 'OK' again and refresh your browser window.

- Your new settings are now being applied.