

Chapter Seventeen (a): Personal, private and public file-share

Summary of Chapter:

- How to set-up separate file share for each user on your Pilot.
- Access via FTP and Web Browser to file share

What you need:

- Knowledge of Admin user account and valid password for your Pilot.
- This document is set using Windows XP.
- A public address is needed.

Software Revision Required:

- Applicable to software revision 5.2.0 > Net/CachePilots

(Net/CachePilot will be referred to as 'Pilot'. All image examples are of a NetPilot.)

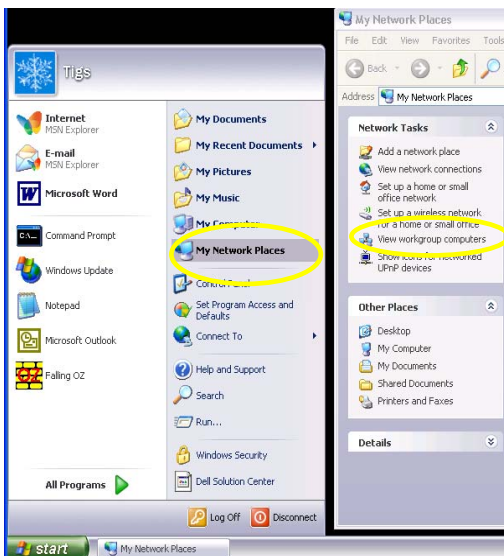


First you will need to create a 'User' on your Pilot, i.e. Fred. For more information on this please look at Chapter 10 (a).



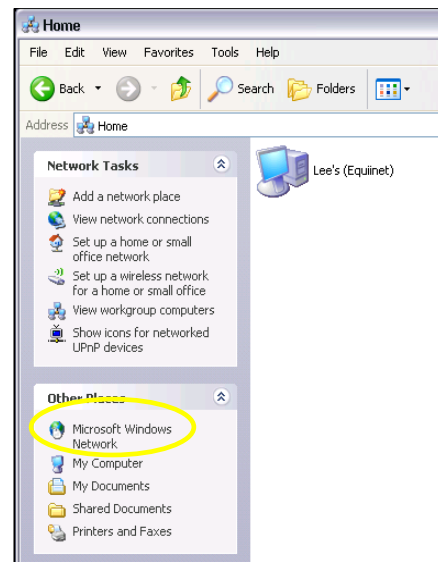
More than one user can access folders by repeating the method below on a second users PC. You can also chose a more appropriate User name by creating a User called 'Shared' or 'Sharedwork' and mapping this 'User' on each computer.

Mapping a drive:

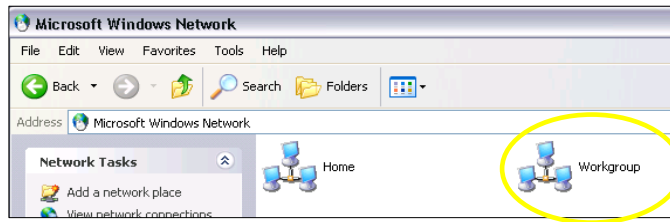



• On the computer linked to your Pilot, select 'My Network Places' from 'Start' and then select 'View workgroup computers' from the left side, both highlighted right.

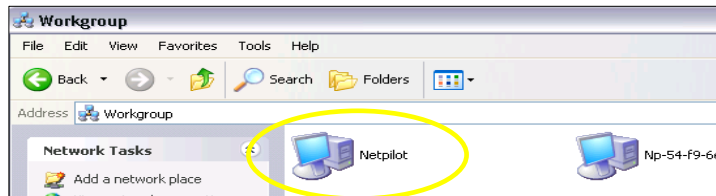
• Then select 'Microsoft Windows Network' as highlighted right.




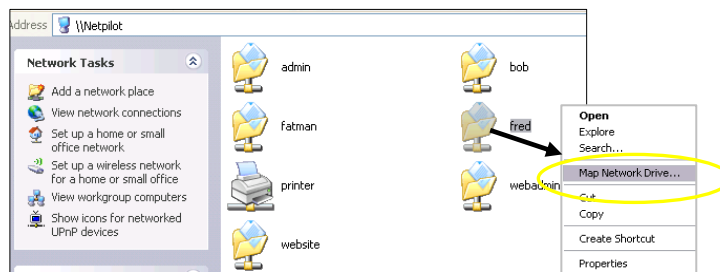
 In the next window, select 'Workgroup', as highlighted below.




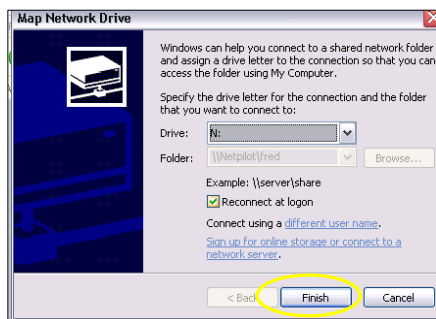
 In the 'Workgroup' window, select your 'Pilot' option, as highlighted below.





 Find the user you want to map the drive to i.e. 'Fred' and right-click their folder as shown. Select the 'Map Network Drive...' as highlighted below.





 Once you have selected this option, the window shown below will appear.

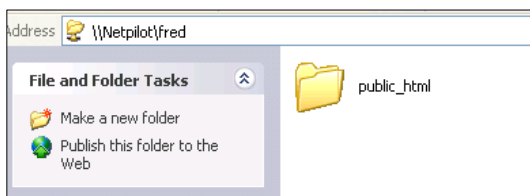



 Select the drive you want to map to i.e. 'N:' from the drop down list.


 Once you have selected a drive, select the 'Finish' button as highlighted.


 **Tip!** If you are not the Admin user you will be asked to log on.

 When you open up the 'users' folder i.e. 'Fred' you will see the file, shown right.



 Anything entered outside the 'public_html' folder is private, and can only be viewed with the correct username and password.

 The files entered into the 'public_html' folder are public and can be seen by everyone.

 They can be viewed either by ftp or web browser. (This is shown on the next page).

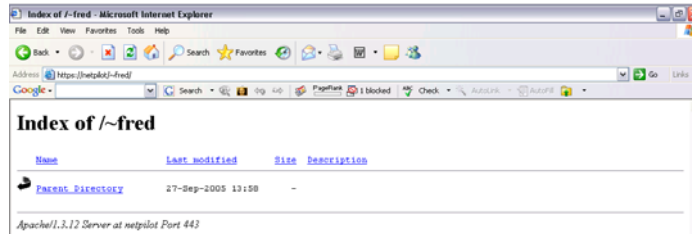


The html directory inside your network is available to anyone via web browser.

Web Browser view:

For anyone to view the public folder and its contents externally, enter the following URL <https://externalIPaddressofNetPilot/> followed by '~' and the username of the folder you want to access in a web browser.

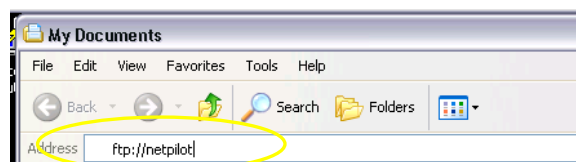
For example: If you wanted to view Fred's folders, you would enter the following into a web browser: <https://194.164.241.149/~Fred>, as shown below:



Documents that are entered into the 'public_html' folder, will be displayed here for others to view them by right-clicking the document and downloading it.

FTP view:

This is a similar procedure to above, enter 'ftp://netpilot' into the URL of a window.



You will see this second window appear:



Enter the relevant username and password into the text boxes provided, and select the 'Log On' button.

Once you have done this you will see the private and public files.



These pages are case-sensitive to the usernames. Please enter your username exactly as it is entered on your Pilot.