

Chapter Five (c): Opening a port on the Trusted LAN to Ping the Internet

Summary of Chapter:

- How to open a port on the Trusted LAN to Ping the Internet

What you need:

- Knowledge of Admin user account and valid password for your NetPilot.

Software Revision Required:

- Applicable to software revision 5.2.0 > NetPilots

Opening a port:

- Log on to the NetPilot as shown in Chapter One (b).

- From the left-hand side of the screen, select 'Firewall' and then 'Firewall Overview'. (All links are highlighted below).




- Select the 'Trusted/Internet' link from the firewall table as highlighted above.


- You will be presented with the below screen:

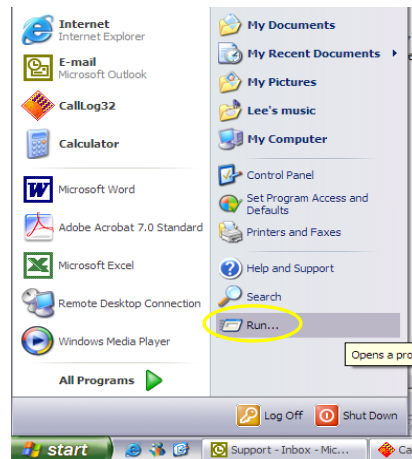



- Select 'accept' from the ICMP drop down list.

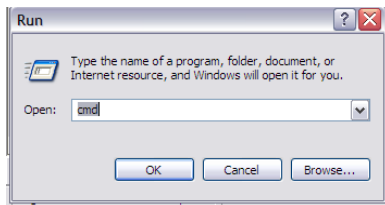
- Then select 'OK' and 'OK' again to confirm.

 You will now be able to ping the Internet via a port on the Trusted LAN.


 To test this, select the 'Start' button on your desktop, then 'Run',



 You will see the below window:



 Enter 'cmd' into the text box provided, then select 'OK'.

 You will see the below screen:


```

C:\WINDOWS\system32\cmd.exe
Microsoft Windows XP [Version 5.1.2600]
(C) Copyright 1985-2001 Microsoft Corp.

P:\>ping www.yahoo.com
Pinging www.yahoo.chadns.net [216.109.118.71] with 32 bytes of data:
Reply from 216.109.118.71: bytes=32 time=86ms TTL=49
Reply from 216.109.118.71: bytes=32 time=85ms TTL=49
Reply from 216.109.118.71: bytes=32 time=85ms TTL=49
Reply from 216.109.118.71: bytes=32 time=80ms TTL=54

Ping statistics for 216.109.118.71:
    Packets: Sent = 4, Received = 4, Lost = 0 (0% loss),
    Approximate round trip times in milli-seconds:
        Minimum = 80ms, Maximum = 86ms, Average = 84ms

P:\>_
  
```

 Enter 'ping www.yahoo.com' then press 'Enter' you will get a response, as highlighted above.